

Type

Project

Notes

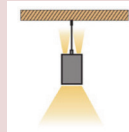


ADVANT LIGHTING

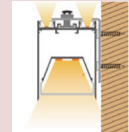


AVL-L5580S

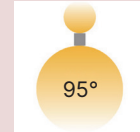
Linear Luminaire



Pendant



Wall Mount



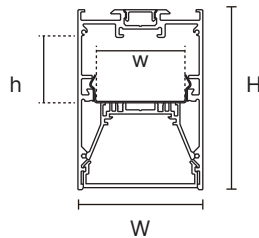
PDM Cover



UGR <19



TECHNICAL DRAWING



w 41.5mm + h 29mm
(1.63" + 1.14")

AVL-L5580S-12: W 55mm x H 80mm x L 1200mm

(W 2.17" x H 3.15" x L 47.24")

AVL-L5580S-25: W 55mm x H 80mm x L 2500mm

(W 2.17" x H 3.15" x L 98.43")

Units in Metric

PRODUCT SPECIFICATIONS

Summary	AVL-L5580S-12	AVL-L5580S-25
Dimensions	W 55mm x H 80mm x L 1200mm	W 55mm x H 80mm x L 2500mm
Power Consumption	6W or 10W	6W or 10W
Lumen Output	110 lm/W or 110 lm/W	110 lm/W or 110 lm/W
Input Voltage	100-277V AC, 347V AC	100-277V AC, 347V AC
Colour Temperature	3000K, 3500K, 4000K, 5000K, RGBW	3000K, 3500K, 4000K, 5000K, RGBW
Beam Angle	95° (PDM), 70° (UGR<19)	95° (PDM), 70° (UGR<19)
Finish	Silver, Black, White	Silver, Black, White
CRI	Ra80, Ra90	Ra80, Ra90
Warranty	5 Years	5 Years

ORDER Form

Next Page

Type _____
 Project _____
 Notes _____



ORDER FORM



1 2 3 4 5 6 7 8 9 OPTIONS

1. FAMILY	2. SIZE	3. OUTPUT LEVEL	CRI	4. VOLTAGE	5. CCT
AVL-L5580S	12 1200mm 25 2500mm	A 660 lm @ 6 W/ft B 1100 lm @ 10W/ft C 600 lm @ 6W/ft D 1000 lm @ 10/ft	Ra80 Ra80 Ra90 Ra90	A 100-277V AC B 347V AC	30 3000K RGBW RGBW 35 3500K 40 4000K 50 5000K
*Lumen output and CRI have restricted corresponding values					

6. INSTALLATION	7. FINISH	8. DIMMING	9. LENS
P Pendant W Wall Mount	SV Silver BK Black WH White	NN None DM 0-10V TRI TRIAC	DMX DMX DL DALI LT Lutron Hi-Lume
			95 PDM 70 URG<19

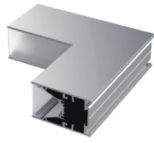
OPTIONS	CONNECTORS	MOUNTING	ACCOUSTIC
	C1 L-4067D-90L C2 L-4067D-90W C3 L-4067D-90N	C4 L-4067D-90T C5 L-4067D-90X C6 L-45-180	M1 L-PTB-S M2 L-PT-S M3 L-WM
		M4 L-CM M5 L-PTB-NPF-S M6 L-PTB-PF-S	A1 SOUND ABSORPTION



C1: 150 X 150 X 67 mm



C2: 150 X 150 X 49 mm



C3: 150 X 150 X 67 mm



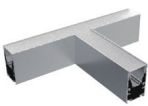
M1: Pendant Cable With Canopy



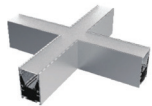
M2: Pendant Cable



M3: Wall Mount Bracket



C4: 300 X 200 X 67mm



C5: 300 X 300 X 67 mm



C6: Connectors



M4: Ceiling Mount Bracket



M5: Suspension Cable without Power Feed



M6: Suspension Cable with Power Feed

Type

Project

Notes



ADVANT
LIGHTING

Sound Absorption Features



Sound Absorption
Acoustic Standard NRC0.75

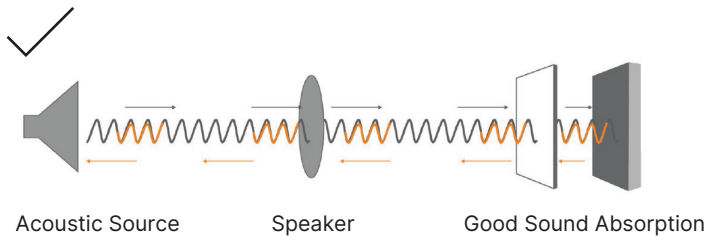


Damp-proof rated
Anti-moisture

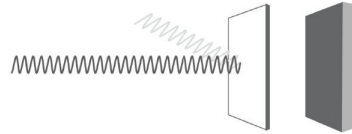
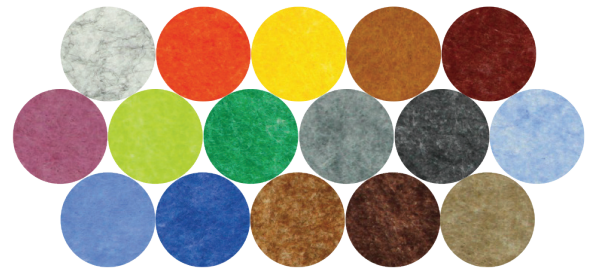


Eco-friendly
Made out of polyester fibre

Diagram



Colour Cards



Poor quality sound absorption
material reflects the sound



advantlighting.ca
(604) 207 9879

© Advant Lighting, LTD. All rights reserved. We reserve the right to change design, materials and finish in any way that will not alter installed appearance or reduce function and performance.

#105-8288 North Fraser Way,
Burnaby, BC V3N 0E9