

Type

Project

Notes



ADVANT  
LIGHTING



## AP-FR3H

### Square Shower Trim with Square Pinhole Aperture

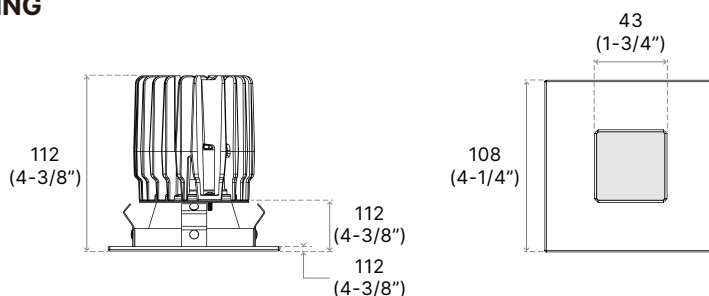
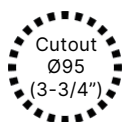
Housing-free light engine install quickly.

Ease of installation, fast-mount features.

\*Ra80 is only with 2700K and 3000K



## TECHNICAL DRAWING



Units in Metric

## PRODUCT SPECIFICATIONS

Summary	AP-FR-3H-10	AP-FR-3H-15
Dimensions	108mm x 108mm x 112mm	108mm x 108mm x 112mm
Power Consumption	10 W	15 W
Lumen Output	480 lm	659 lm
Input Voltage	120-277V AC	120-277V AC
Colour Temperature	2700K, 3000K, 3500K, 4000K	2700K, 3000K, 3500K, 4000K, WD
Finish	Gold, Chrome, White, Brushed Nickel, Satin Nickel, Black	Gold, Chrome, White, Brushed Nickel, Satin Nickel, Black
CRI	*Ra80, Ra90	*Ra80, Ra90
Beam Angle	48° (Flood)	48° (Flood)
Warranty	5 Years	5 Years

## ORDER FORM

1	2	3	4	5	6	7	8	9
1. FAMILY	2. SIZE	3. WATTAGE	4. VOLTAGE	5. CCT				
AP-FR	3H 108 x 108 x 112	10 10W 15 15W	A 120-277V AC	27 2700K 30 3000K	35 3500K 40 4000K	WD Warm Dimming (15W Only)		
6. DIMMING	7. CRI	8. BEAM ANGLE	9. FINISH					
DM 0-10V Dimming TRI TRIAC Dimming	80 *Ra80 90 Ra90	48 48°	CH Chrome AL Aluminum	SN Satin Nickel BN Brushed Nickel	WH White BK Black			



advantlighting.ca  
(604) 207 9879

© Advant Lighting, LTD. All rights reserved. We reserve the right to change design, materials and finish in any way that will not alter installed appearance or reduce function and performance.

#105-8288 North Fraser Way,  
Burnaby, BC V3N 0E9

Type

Project

Notes



ADVANT  
LIGHTING

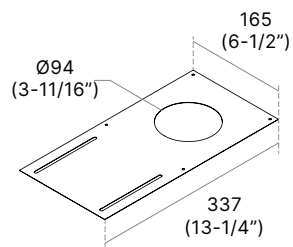
## OPTIONS & ACCESSORIES

### MOUNTING PLATE

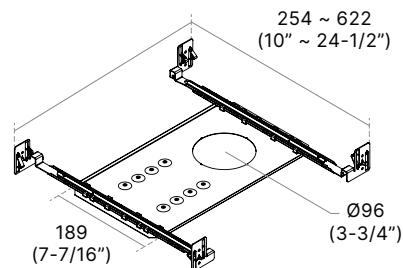
Ideal for unfinished basements and other renovation projects.  
Choice of Square or Round for 3.5" Remodel housings.  
Adjustable mounting bars included.



CODE	DESCRIPTION	HOLE DIAMETER	DIMENSIONS
P3RN	Without Mounting Bars	Ø94 (3-11/16")	165 x 337 (6-1/2" x 13-1/4")
P3RNW	With Mounting Bars	Ø96 (3-3/4")	388 x 254 ~ 622 (15-5/16" x 10" ~ 24-1/2")



P3RN



P3RNW

### LENSES

Choice of replacement lenses for on-site modification of light diffusion.  
Shower Light trims available only with Frosted lens.  
\*Wall Wash trims available only with Frosted/Frosted lens.



CL Clear



FR Frosted



LN Linear



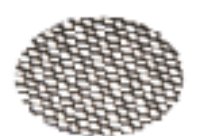
FC Frosted Clear Center



SL Solite



PR Prismatic



HC Honeycomb



advantlighting.ca  
(604) 207 9879

© Advant Lighting, LTD. All rights reserved. We reserve the right to change design, materials and finish in any way that will not alter installed appearance or reduce function and performance.

#105-8288 North Fraser Way,  
Burnaby, BC V3N 0E9

Type

Project

Notes

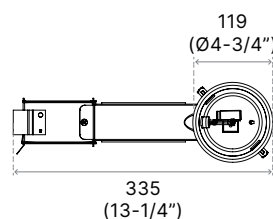
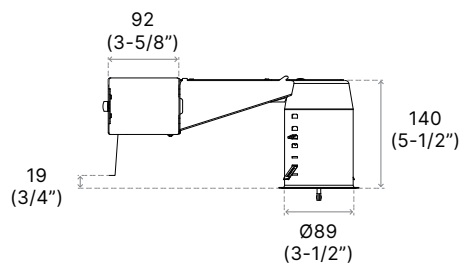


## HOUSINGS



### REMODEL IC

REUR		3		V					
1. MODEL		2. SERIES		3. VOLTAGE		4. DIMMING			
REUR	Remodel Housing	3	3-1/2"	V	120-277V AC	E1	ELV 10W	D1	0-10V 10W
						E2	ELV 15W	D2	0-10V 15W
						EB2	ELV (+VALUE) 15W	ND	Non-dimmable 15W



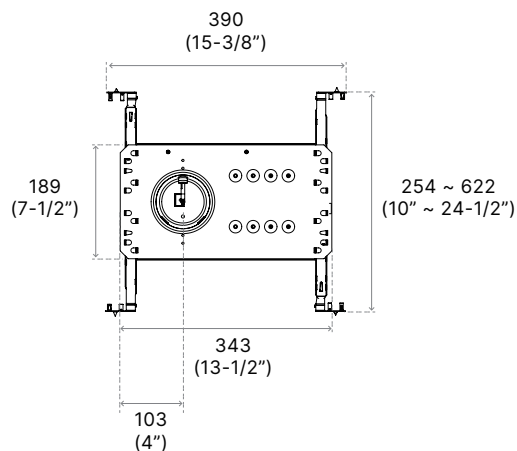
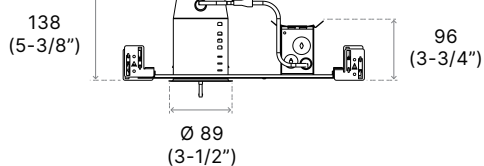
### NEW CONSTRUCTION IC

NWUR		3		V					
1. MODEL		2. SERIES		3. VOLTAGE		4. DIMMING			
NWUR	New	3	3-1/2"	V	120-277V AC	E1	ELV 10W	D1	0-10V 10W
	E2					ELV 15W	D2	0-10V 15W	
	EB2					ELV (+VALUE) 15W	ND	Non-dimmable 15W	
	Construction Housing								



#### 5. OPTION

**EM** Emergency Back Up



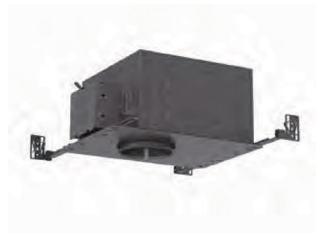
Type

Project

Notes



## HOUSINGS



### Classic New Construction IC

ISUR		3	V		
1. MODEL	2. SERIES	3. VOLTAGE	4. DIMMING		
ISUR	IC and Air Tight Housing	3 3-1/2"	V 120-277V AC	E1 ELV 10W E2 ELV 15W EB2 ELV (+VALUE) 15W	D1 0-10V 10W D2 0-10V 15W ND Non-dimmable 15W

