

Type

Project

Notes



### AP-AV4RSF

#### Ultra-Thin Profile Round Regressed Shower Trim

Housing-free light engine install quickly.

The perfect option for a flush finish with ceiling materials.

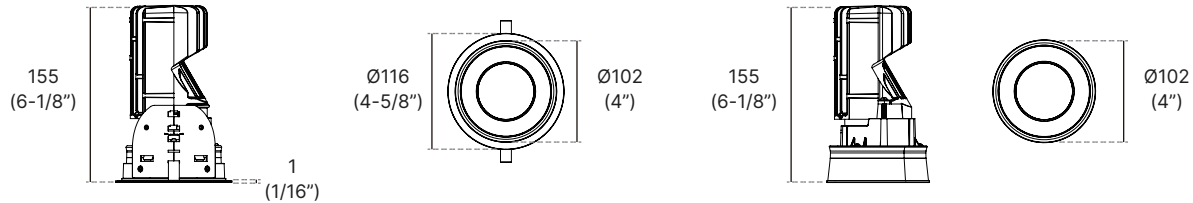
Ease of installation, fast-mount features.



IP65  
RATED & TESTED

5 YEARS  
LIMITED WARRANTY  
INCLUDED

### TECHNICAL DRAWING



TR - Flangeless Trim

Units in Metric

### PRODUCT SPECIFICATIONS

Summary	AP-AV4RSF-AR	AP-AV4RSF-TR
Dimensions	Ø116mm x 155mm	Ø102mm x 155mm
Power Consumption	14 W, 23 W	14 W, 23 W
Lumen Output	1050 - 1550 lm	1050 - 1550 lm
Input Voltage	120-277V AC	120-277V AC
Colour Temperature	2700K, 3000K, 3500K, 4000K	2700K, 3000K, 3500K, 4000K
Finish	Gold, Chrome, Brushed Chrome, Matte White, Brushed Nickel, Satin Nickel, Matte Black, Aluminum	
CRI	Ra90	Ra90
Beam Angle	44° (Flood)	44° (Flood)
Warranty	5 Years	5 Years

### ORDER FORM

1	2	3	4	5	6	7	8
1. FAMILY	2. SIZE	3. WATTAGE	4. VOLTAGE	5. CCT			
<b>AP-AV34SF</b>	<b>AR</b> Ø116 x 155	<b>14</b> 14W	<b>A</b> 120-277V AC	<b>27</b> 2700K	<b>35</b> 3500K	<b>CCT</b> Colour Tuning	<b>WD</b> Warm Dimming
	<b>TR</b> Ø102 x 155	<b>23</b> 23W		<b>30</b> 3000K	<b>40</b> 4000K		
6. BEAM ANGLE	7. TRIM FINISH - AR only		8. REFLECTOR FINISH				
<b>44</b> 44°	<b>CH</b> Chrome	<b>BC</b> Brushed Chrome	<b>WH</b> White	<b>GD</b> Gold	<b>BK</b> Black	<b>CL</b> Clear	
	<b>AL</b> Aluminum	<b>BN</b> Brushed Nickel	<b>BK</b> Black	<b>SN</b> Satin Nickel	<b>AL</b> Aluminum	<b>WH</b> White	

Type

Project

Notes

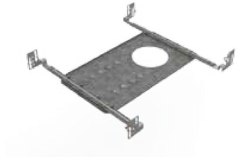


ADVANT  
LIGHTING

## OPTIONS & ACCESSORIES

### MOUNTING PLATE

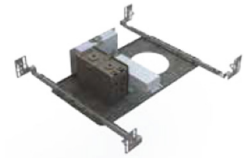
Ideal for unfinished basements and other renovation projects.  
Choice of Square or Round for 4" Remodel housings.  
Adjustable mounting bars included.



**PA4NW**      4" Square 4" Round

### EMERGENCY DRIVER

Battery life: 120 minutes  
Available only for 3.5" and 4" New Construction housings.  
Housing Option: **-EM** suffix



**EM**

### STEP-DOWN TRANSFORMER

Available only for 3.5" and 4" Remodel and New Construction housings.



**STD-60M**      4" Square, 4" Round

### LENSES

Choice of replacement lenses for on-site modification of light diffusion.  
Shower Light trims available only with Frosted lens.  
\*Wall Wash trims available only with Frosted/Frosted lens.



**CL**      Clear



**FR**      Frosted



**WW**      Wall Wash



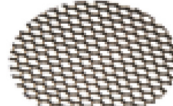
**LN**      Linear



**SL**      Solite



**PR**      Prismatic



**HC**      Honeycomb



Type

Project

Notes



ADVANT LIGHTING

## HOUSINGS



### IC AIR TIGHT HOUSING - ROUND

ICAT	6	R	4	V	
1. MODEL	2. HOUSING	3. TYPE	4. SERIES	5. DRIVER	6. PERFORMANCE
<b>ICAT</b> Insulated Housing Air Tight	<b>6</b> 410 x 254 (16" x 10")	<b>R</b> Round	<b>4</b> 4"	<b>V</b> 120-277V AC	<b>14</b> 14 W 1300 lm <b>23</b> 23 W 1900 lm



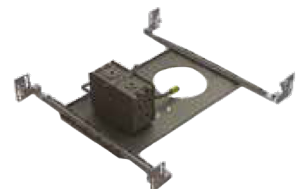
### IC AIR TIGHT HOUSING - SQUARE

ICAT	6	S	4	V	
1. MODEL	2. HOUSING	3. TYPE	4. SERIES	5. DRIVER	6. PERFORMANCE
<b>ICAT</b> Insulated Housing Air Tight	<b>6</b> 410 x 254 (16" x 10")	<b>S</b> Square	<b>4</b> 4"	<b>V</b> 120-277V AC	<b>14</b> 14 W 1300 lm <b>23</b> 23 W 1900 lm



### REMODEL HOUSING

REA	4	S	
1. MODEL	2. SERIES	3. DRIVER	4. PERFORMANCE
<b>REA</b> Remodel Housing	<b>4</b> 4"	<b>V</b> 120-277V AC	<b>1</b> 1300 lm (1000 lm with 2-1/2") <b>2</b> 1900 lm <b>L</b> WD or CT CT: Colour Tuning WD: Warm Dimming



### NEW CONSTRUCTION HOUSING

NWA		4	V		
1. MODEL	2. TYPE	3. SERIES	4. DRIVER	5. PERFORMANCE	6. OPTIONS
<b>NWA</b> New Construction Housing	<b>S</b> Square <b>R</b> Round	<b>4</b> 4"	<b>V</b> 120-277V AC	<b>1</b> 1300 lm (1000 lm with 2-1/2") <b>2</b> 1900 lm <b>L</b> WD or CT	<b>EM</b> Emergency Driver (not available with WD and CT)



### IC INSULATED HOUSING

ISA		4	V	
1. MODEL	2. TYPE	3. SERIES	4. DRIVER	5. PERFORMANCE
<b>ISA</b> Insulated Housing	<b>S</b> Square <b>R</b> Round	<b>4</b> 4"	<b>V</b> 120-277V AC	<b>1</b> 1300 lm (1000 lm with 2-1/2") <b>2</b> 1900 lm <b>L</b> WD or CT