

Type	
Project	
Notes	



ADL-WUL Series

Aluminum Walkover Up-Light

- For outdoor, recessed, path, decking
- External driver - 2 metres of power cable
- Professional optical lens
- Weather resistant hard anodized finish
- Aluminum
- Glue-free or underwater versions



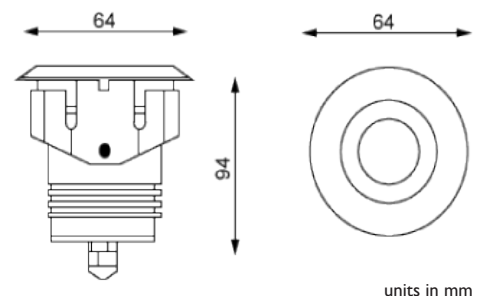
Frosted glass lens



Silk-screen glass lens

PRODUCT SPECIFICATIONS

Summary	ADL-WUL-0501A
Lumen Output	550 lm
Power Consumption	5 W
Dimensions (mm)	Ø 64 x 94
Voltage	24V DC
Colour Temperature	3000k, 4000k, 5000k
IP	67, 68
Warranty	5 years



units in mm

ORDER FORM

ADL-WUL-0501A				
1	2	3	4	5
1. FAMILY	2. BEAM ANGLE	3. CCT	4. IP	5. LENS OPTIONS
ADL-WUL-0501A	40 40° (standard) 24 24° 60 60°	30 3000K 40 4000K 50 5000K	67 68	1 Frosted glass lens 2 Silk-screen glass lens